



# JOURNEYS ONLINE

Tuesday, September 8 - Good Morning!



- SAVINGS
- INSURANCE
- FINANCIAL
- MEMBERSHIP
- TRAVEL
- AUTO TRAVEL
- AUTO
- DRIVING SCHOOL

- WEB EXTRAS
- CURRENT ISSUE
- GALLERIES
- WIN PRIZES
- ARCHIVES
- FREE INFO

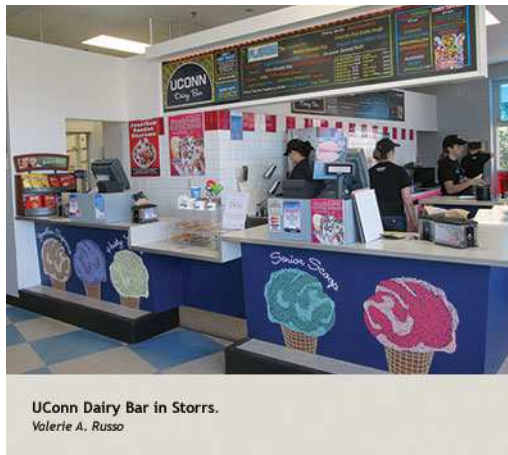
[View All Stories](#)   [E-mail A Friend](#)   [Print Story](#)

## Connecticut Barns Beckon

(Continued)

Other sites on this tour include the Denison Homestead Farm Market in Stonington, the Nathan Lester House and Farm Tool Museum in Ledyard, Heritage Trail Vineyards in Lisbon, Blue Slope Country Museum in Franklin, Zagray Farm Museum in Colchester and Wadsworth Stable in Lebanon, a building that was moved from the former Hartford estate of Col. Jeremiah Wadsworth, commissary general for the Continental Army. Today, Wadsworth Stable contains a replica of the stall where Gen. George Washington's horse, Nelson, recuperated from an injury, as well as antique oxcarts and changing exhibits. It's open mid-May through mid-October.

The Connecticut River Valley North tour is an 11-site tour beginning at the East Hartford Historical Society's Burnham Blacksmith Shop in East Hartford and ending at the Hill-Stead Museum in Farmington, featuring the 1901 mansion and carriage barn designed by Theodate Pope Riddle, one of the first American women architects. Don't miss the Connecticut Valley Tobacco Museum in Windsor, a former tobacco shed with exhibits on the local cigar tobacco agricultural heritage. Located in Windsor's Northwest Park, the tobacco museum is open Tuesdays through Thursdays and Saturdays, March through December.



UConn Dairy Bar in Storrs.  
Valerie A. Russo

Other sites on this tour include the Noden-Reed Barn and House in Windsor Locks, Phelps-Hatheway House and Garden in Suffield, Hastings Family Farm in Suffield, Garlic Farm in West Granby, Holcomb Farm in Granby, as well as the Simsbury Historical Society's Phelps Barn, Tulmeadow Farm and Flamig Farm, all in Simsbury.

The Connecticut River Valley South tour has five numbered sites, starting with the Webb-Deane-Stevens Museum in Wethersfield and ending at the Deep River Historical Society's Stone House in Deep River. At the Welles Shipman Ward House in Glastonbury, see examples of three classic barns of the Connecticut Valley. There's a 1790 English bank barn, the type of barn often built against the side of a hill, with one entrance on the higher side and another entrance on the lower side. There's a 19th-century New England barn, featuring a ground level gable entrance on the short side of the barn. And there's a renovated tobacco shed from the 1870s. Barn tours are offered in the summer and during the annual Farm Festival in late September. Other sites on this tour are the Smith-Harris House and the East Lyme Historical Society's Thomas Lee House, both in East Lyme.

[« previous page](#)

[next page »](#)

[View All Stories](#)   [E-mail A Friend](#)   [Print Story](#)

Win

a Branson Vacation for four!

ENTER ▶

eJOURNEYS

Stay informed!

Subscribe to the eJourneys newsletter today!

GO ▶

2015 © H&A Media Group - ALL RIGHTS RESERVED  
Designated trademarks and brands are the property of their respective owners.  
The AAA trademark is the property of the American Automobile Association.